

ROOF-CER



Centrifugalni krovni ventilator sa spoljnim rotorom Centrifugal roof fan with external rotor motor

APLIKACIJE

ROOF-CER serija je namenjena za krovne instalacije za aspiraciju relativno malih količina vazduha u civilnim i poslovnim zgradama.

DOMET

Asortiman se sastoji od 4 modela sa prečnikom radnog kola od 190 do 250 mm.

KARAKTERISTIKE

ROOF-CER seriju karakteriše veoma kompaktna i robusna konstrukcija, vizuelni efekat koji se dobro uklapa u objekte za koje je namenjen i savršeno podešavanje brzine rotora.

KONSTRUKCIJA

- Konstrukcija od obojenog čeličnog lima.
- Visoka efikasnost nazad zakrivljenog radnog kola.
- Elektromotor sa spoljnim rotorom IP 44 cl F elektronski podesiv
- priključen na eksterni IP54 terminalni blok od tehnopolimera.

TEHNIČKE SPECIFIKACIJE

- Preneti vazduh: čist, neabrazivan.
- Temperatura vazduha: -20 ° C / + 50 ° C
- Napon i frekvencija napajanja:
 - Monofazna verzija (M) 230V-50 Hz.

PRIBOR

- Regulatori brzine
- Servisni prekidač (SV)
- Zaštitna mreža (obavezna za upotrebu sa slobodnim ustima)

APPLICATIONS

ROOF-CER line is destined to roofing installations to exhaust low air volumes, in civilian and commercial buildings.

RANGE

This line consists of 4 models with impeller diameter from 190 up to 250 mm.

ADVANTAGES

ROOF-CER fans are characterized by the sturdy and compact construction, a visual impact easy to be harmonized with the buildings and by their perfectly adjustable speed.

CONSTRUCTION

- Frame in painted metal sheet.
- High efficiency centrifugal backward curved impeller.
- External rotor motor IP 44 cl F speed adjustable through electronic speed controller, wired to an external terminal box in techno-polymer IP54.

TECHNICAL SPECIFICATIONS

- Conveyed air: clean, not abrasive.
- Air temperature: -20°C / +50°C
- Voltage:
 - Mono-phase version (M) 230V-50 Hz.

ACCESSORIES

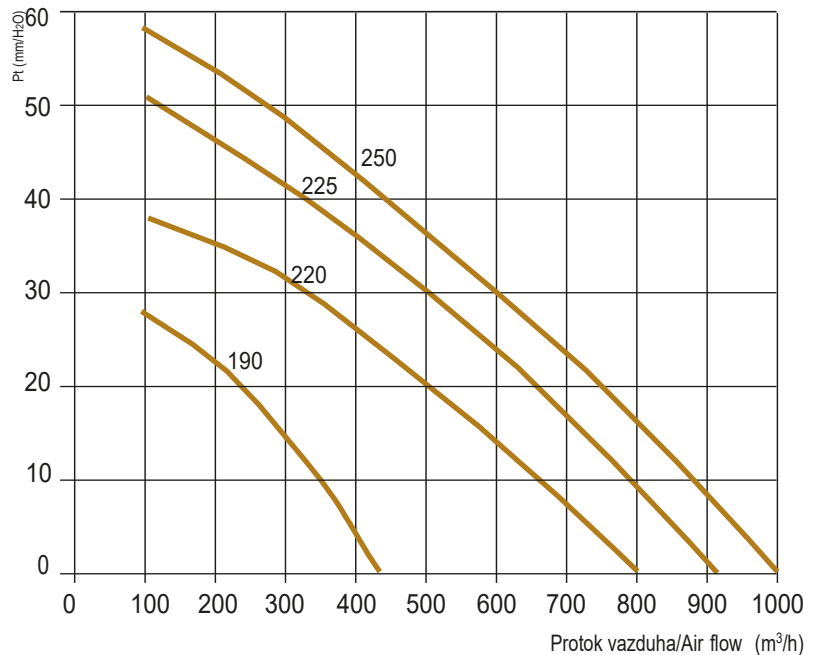
- Mono-phase speed regulators
- Service switch (SW)
- Protection grid (mandatory for free air)



Performanse prikazane na dijagramima odnose se na vazduh na temperaturi od 15 °C i nadmorskoj visini od 0 m. , a dobijeni su u instalacijama tipa "C" u nedostatku mreže i pribora.
 Performances shown in the selection diagrams refer to air at 15°C temperature and 0 mt a.s.l. altitude, and they were obtained in installation type "C" with no grid nor accessories.

ROOF-CER

Modello Model	Portata Flow rate (m³/h)	Pm (W)	In max (A)	Lp dB(A)	Regolatore Regulator
190 M	425	60	0,26	39	SREM 1,5A
220 M	800	85	0,38	41	SREM 1,5A
225 M	930	133	0,6	43	SREM 1,5A
250 M	1000	220	0,95	45	SREM 1,5A



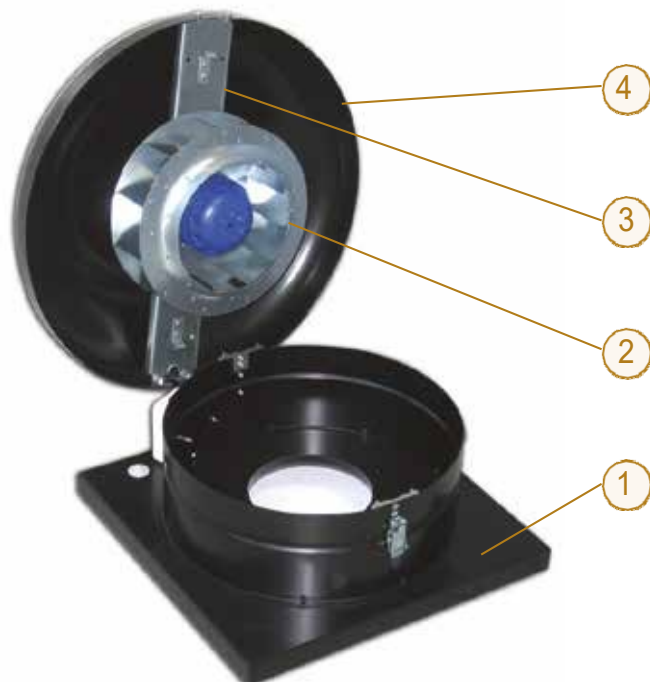
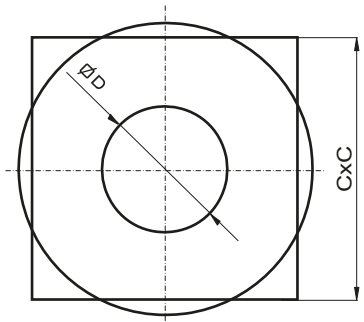
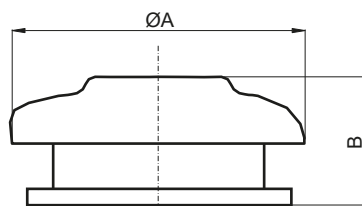
Pm= Snaga motora / Motor power.
 In= Potrošnja struje / Absorbed current
 Lp= Nivo zvučnog pritiska u slobodnom polju 6 m od ventilatora sa kanalnim ulazom i slobodnim izlazom
 Sound pressure level in free field at 6 m distance from the fan, with ducted inlet and free outlet.

ROOF-CER Dimenzije

Dimensions

Model Model	A	B	C	D	kg
190	344	210	305	125	5
220	450	215	405	145	7
225	450	248	405	145	8
250	450	248	405	165	8

Dimenzije u mm/Dimensions in mm



- 1 - Baza/Base
- 2 - Motorna jedinica - girante Motor impeller group
- 3 - Držać motora/Motor support
- 4 - Prekrivač/Cover

Tolerancije: aerodinamičke performanse i buka su unutar tolerancija navedenih u DIN 24166, klasa 2

Tolerances: performances and sound power levels within the tolerances allowed by the DIN 24166 standard for Class 2.

„Sve ventilacione jedinice, prema evropskoj regulativi 1253/14, moraju da rade pomoću varijatora brzine prema vrsti elektromotora. Indikacija pogona je prikazana u dokumentaciji same ventilacione jedinice ”

“All the ventilation units, according to EU Rule 1253/14, must be equipped with variable speed drive depending by motor type. For the suitable driver please refer the technical documentation of the unit itself”

„Sve ventilacione jedinice, prema evropskoj regulativi 1253/14, moraju da rade pomoću varijatora brzine prema vrsti elektromotora. Indikacija pogona je prikazana u dokumentaciji same ventilacione jedinice

“In case of EU installation use only for air changes in environments NOT solely occupied by persons (for example: professional kitchens, industrial and agricultural applications, machinery ventilation, OEM, data centers,...)